

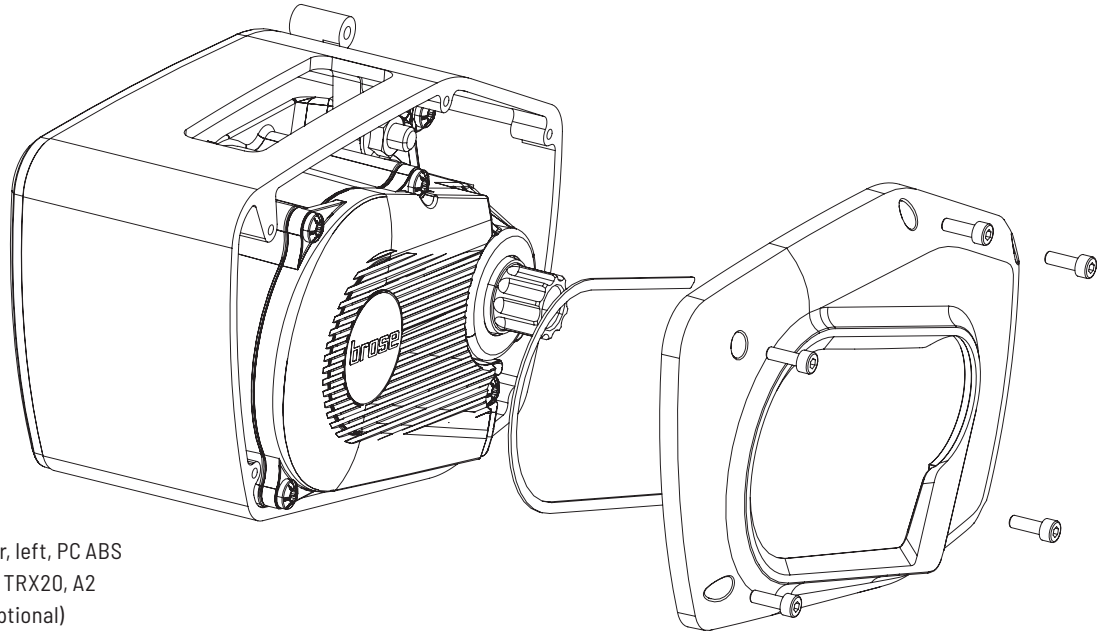
# DESIGNCOVER CXBE 2.0

## Assembly instruction

As at 03.07.2019



### Designcover left



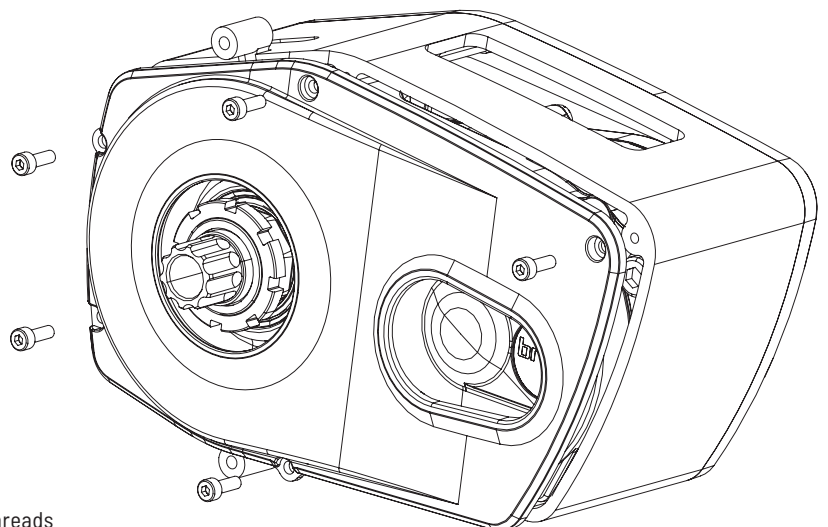
#### Parts included

- \* 1pc CXBE 2.0 cover, left, PC ABS
- \* 5 pcs M4x10 bolts, TRX20, A2
- \* 1pc sealing ring (optional)

#### Note

- \* Tightning torque 1 Nm
- \* Apply several drops of threadlocker blue on the threads
- \* Compatible with Brose Drive Mag horizontal

### Designcover right



#### Parts included

- \* 1pc CXBE 2.0 cover, right, PC ABS
- \* 5 pcs M4x10 bolts, TRX20, A2

#### Note

- \* Tightning torque 1 Nm
- \* Apply several drops of threadlocker blue on the threads
- \* Compatible with Brose Drive Mag horizontal